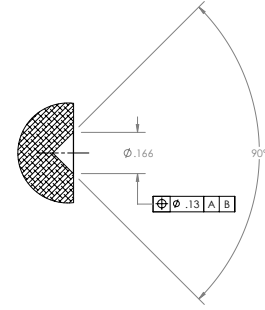


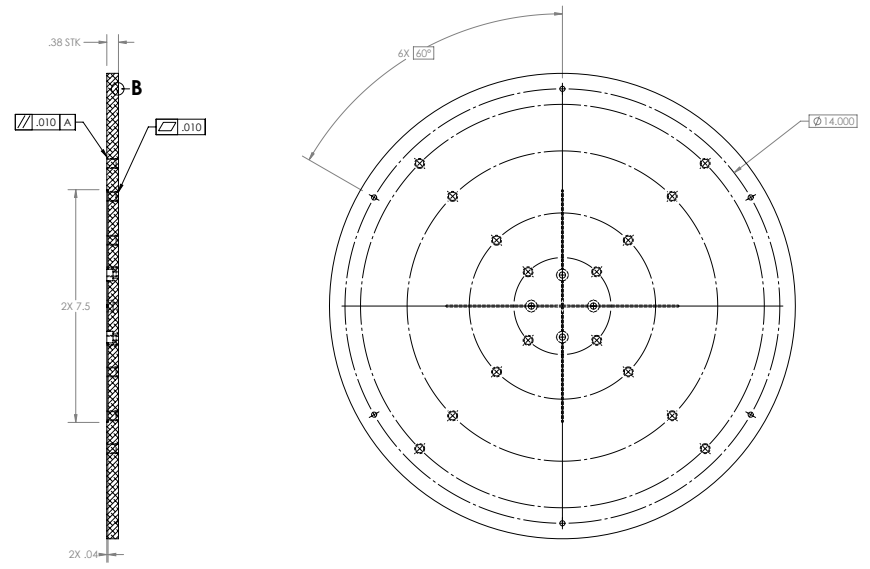
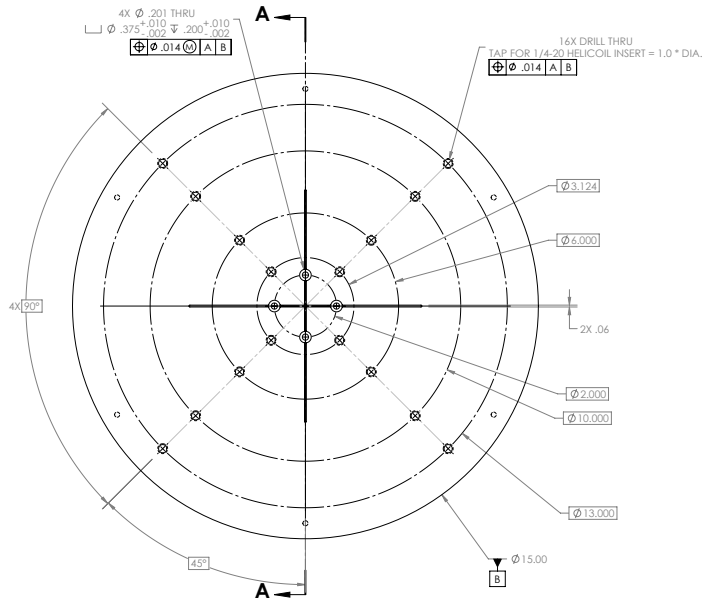
NOTES:

- (102) APPLICABLE STANDARDS AND SPECIFICATIONS:
 ASME Y14.5-1994, DIMENSIONING AND TOLERANCING
 ASME Y11, ABBREVIATIONS
 ASME Y14.36, SURFACE TEXTURE SYMBOLS
 ANSI/ AWS A2.4-1993, STANDARD SYMBOLS FOR WELDING
 ANSI/ AWS D9.1-1990, SPECIFICATION FOR WELDING OF SHEET METAL
 ANSI/ AWS A3.0-1994, STANDARD WELDING TERMS
- BAG OR TAG WITH LABEL USING .125 in. [3mm] HIGH CHARACTERS IN ACCORDANCE WITH MIL-130 USING FORMAT:
 LINE 1: M4200301-MDE-2000-0275 REV. 001
- (701) THE SELLER SHALL PACKAGE THE PART TO MAINTAIN CLEANLINESS AND TO PREVENT DAMAGE DURING HANDLING AND SHIPMENT TO THE SITE SPECIFIED ON THE PURCHASE ORDER.
- (702) SHIPPING CONTAINERS SHALL BE MARKED TO INDICATE THE FOLLOWING:
 - FRIB PURCHASE ORDER NUMBER
 - SHIPPING ADDRESS AS SPECIFIED ON THE PURCHASE ORDER, INCLUDING THE BUILDING NUMBER
 - "FRIB CONTACT" AS SPECIFIED ON THE PURCHASE ORDER
 - CONTENTS CONTAINED IN THE PACKAGE(S)
 - SELLER'S NAME
 - "TOP SIDE UP," IF REQUIRED
 - "FRAGILE," IF REQUIRED
 - "DO NOT OPEN" LABEL, MINIMUM OF ONE LABEL PER SIDE PER SHIPPING CONTAINER.

REVISIONS				
ZONE	REV.	DESCRIPTION	DATE	APPROVED
	1	RELEASED	2021.09.03	N.BULMAN



**DETAIL B
SCALE 4 : 1**



SECTION A-A

DATE	BY	CHKD	APP'D	DATE	DESCRIPTION
2021.09.03	N.BULMAN				RELEASED

REVISION	DATE	DESCRIPTION
1	2021.09.03	RELEASED

Facility for Rare Isotope Beams 1010 Central Expressway, Durham, NC 27708 TEL: 919.487.3900 FAX: 919.487.3901 WWW.FRIB.DUKE.EDU	NEW PERSONAL PROPERTY F-SEE BEAMLINER F-SEE MAGNET SYSTEMS F-SEE MAGNET SYSTEMS
TAMI END-STATION PLATE ITEM NO. D SCALE: 1:2 SHEET 1 OF 1	M4200301-MDE-2000-0275 REV. 001