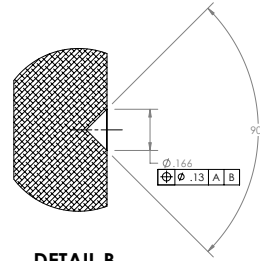


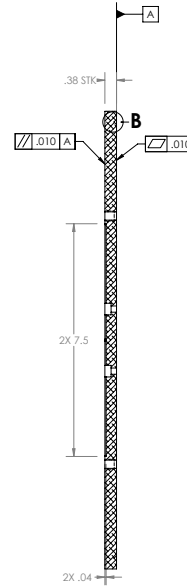
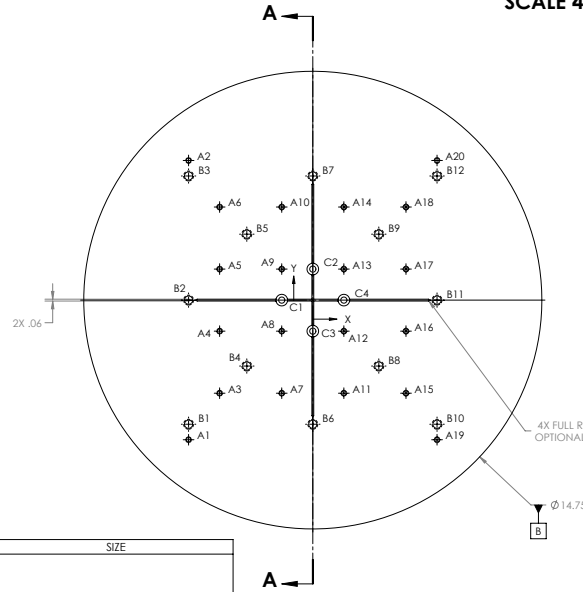
| REVISIONS | | | | |
|-----------|------|-------------|------------|----------|
| ICONE | REV. | DESCRIPTION | DATE | APPROVED |
| | 1 | RELEASED | 2021.09.03 | N.BULMAN |

NOTES:

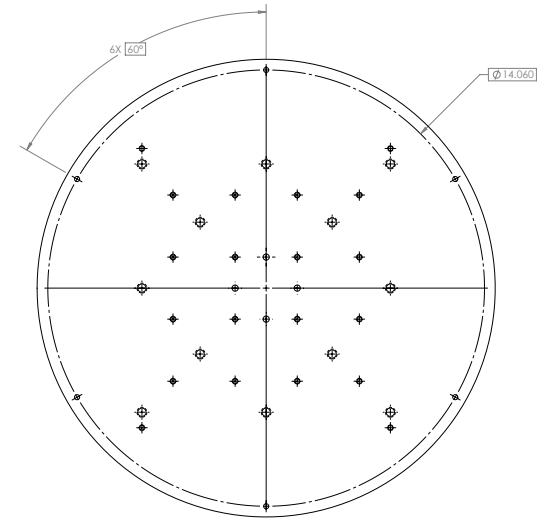
- (102) APPLICABLE STANDARDS AND SPECIFICATIONS:
 ASME Y14.5-1994, DIMENSIONING AND TOLERANCING
 ASME Y1.1, ABBREVIATIONS
 ASME Y14.36, SURFACE TEXTURE SYMBOLS
 ANSI/ AWS A2.4-1993, STANDARD SYMBOLS FOR WELDING
 ANSI/ AWS D9.1-1990, SPECIFICATION FOR WELDING OF SHEET METAL
 ANSI/ AWS A3.0-1994, STANDARD WELDING TERMS
- BAG OR TAG WITH LABEL USING .125 IN. [3mm] HIGH CHARACTERS IN ACCORDANCE WITH MIL-130 USING FORMAT:
 LINE 1: M4200301-MDE-2000-0274 REV: 001
- (701) THE SELLER SHALL PACKAGE THE PART TO MAINTAIN CLEANLINESS AND TO PREVENT DAMAGE DURING HANDLING AND SHIPMENT TO THE SITE SPECIFIED ON THE PURCHASE ORDER.
- (702) SHIPPING CONTAINERS SHALL BE MARKED TO INDICATE THE FOLLOWING:
 FRIB PURCHASE ORDER NUMBER
 SHIPPING ADDRESS AS SPECIFIED ON THE PURCHASE ORDER, INCLUDING THE BUILDING NUMBER
 "FRIB CONTACT" AS SPECIFIED ON THE PURCHASE ORDER
 CONTENTS CONTAINED IN THE PACKAGE(S)
 SELLER'S NAME
 "TOP SIDE UP" IF REQUIRED
 "FRAGILE," IF REQUIRED
 "DO NOT OPEN" LABEL, MINIMUM OF ONE LABEL PER SIDE PER SHIPPING CONTAINER.



**DETAIL B
TYP.
SCALE 4:1**



SECTION A-A



| TAG | X LOC | Y LOC | SIZE |
|-----|----------|----------|------|
| A1 | [-4.000] | [-4.500] | |
| A2 | [-4.000] | [4.500] | |
| A3 | [-3.000] | [-3.000] | |
| A4 | [-3.000] | [-1.000] | |
| A5 | [-3.000] | [1.000] | |
| A6 | [-3.000] | [3.000] | |
| A7 | [-1.000] | [-3.000] | |
| A8 | [-1.000] | [-1.000] | |
| A9 | [-1.000] | [1.000] | |
| A10 | [-1.000] | [3.000] | |
| A11 | [1.000] | [-3.000] | |
| A12 | [1.000] | [-1.000] | |
| A13 | [1.000] | [1.000] | |
| A14 | [1.000] | [3.000] | |
| A15 | [3.000] | [-3.000] | |
| A16 | [3.000] | [-1.000] | |
| A17 | [3.000] | [1.000] | |
| A18 | [3.000] | [3.000] | |
| A19 | [4.000] | [-4.500] | |
| A20 | [4.000] | [4.500] | |

| TAG | X LOC | Y LOC | SIZE |
|-----|----------|----------|------|
| B1 | [-4.000] | [-4.000] | |
| B2 | [-4.000] | [0.000] | |
| B3 | [-4.000] | [4.000] | |
| B4 | [-2.125] | [-2.125] | |
| B5 | [-2.125] | [2.125] | |
| B6 | [0.000] | [-4.000] | |
| B7 | [0.000] | [4.000] | |
| B8 | [2.125] | [-2.125] | |
| B9 | [2.125] | [2.125] | |
| B10 | [4.000] | [-4.000] | |
| B11 | [4.000] | [0.000] | |
| B12 | [4.000] | [4.000] | |
| C1 | [-1.000] | [0.000] | |
| C2 | [0.000] | [1.000] | |
| C3 | [0.000] | [-1.000] | |
| C4 | [1.000] | [0.000] | |

DRILL THRU
TAP FOR #6-32 HELICOIL INSERT = 1.5 * DIA.
 $\text{Ø } \phi .014 \text{ A B}$

DRILL THRU
TAP FOR 1/4-20 HELICOIL INSERT = 1.0 * DIA.
 $\text{Ø } \phi .014 \text{ A B}$

$\text{Ø } .201 \text{ THRU}$
 $\text{L } \text{Ø } .375 \text{ THRU}$
 $\text{L } \text{Ø } .200 \text{ THRU}$
 $\text{Ø } \phi .014 \text{ A B}$

| UNLESS OTHERWISE SPECIFIED: | APPROVAL | NAME | DATE |
|-----------------------------|----------|------|------|
| DESIGNED BY: [] | DESIGNED | [] | [] |
| DRAWN BY: [] | DRAWN | [] | [] |
| CHECKED BY: [] | CHECKED | [] | [] |
| APPROVED BY: [] | APPROVED | [] | [] |
| DATE: [] | | | |
| PROJECT: [] | | | |
| DRAWING NO: [] | | | |
| SCALE: 1:2 | | | |

Facility for Rare Isotope Beams
 NEW PERSONAL PROPERTY
 F-SEE BEAMLINE
 F-SEE MAGNET SYSTEMS
 F-SEE MAGNET SYSTEMS
BERKELEY END-STATION PLATE
 M4200301-MDE-2000-0274
 SHEET 1 OF 1